



© White Arkitekter

#### HERITAGE FEATURES

- Roof shape and finishing
- Proportions
- Number of floors
- Building width
- Window-to-wall ratio
- Balconies

#### TPOLOGY 6 SWEDEN

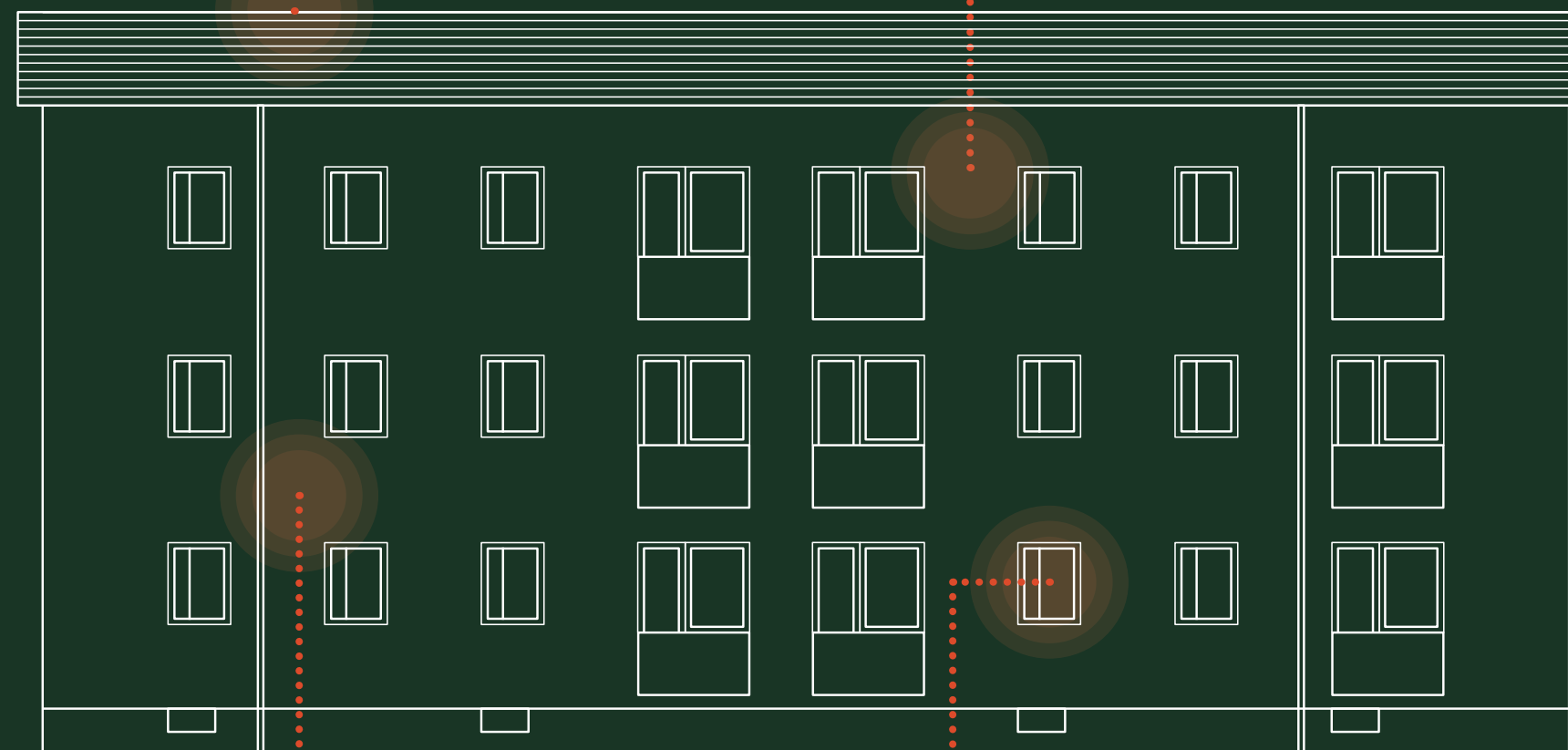
## *Flerbostadshus functionalism* Swedish functionalist multi-family housing block (1920–1945)

Apartment blocks are typical of residential neighbourhoods in Swedish cities such as Stockholm, Malmö, and Gothenburg. They were built to improve living conditions, a principle of functionalism introduced at the Stockholm Exhibition in 1930 and influenced by modernist ideals from France and Germany

#### CONSTRUCTION

Pitched roof, timber structure, single-curved roof tiles

Brick walls (25 cm – thick) with or without a wood fibres layer (5 cm – thick), lime-cement plaster



Reinforced concrete slab, topped with wedged timber joists, infill layer of wood ash

Coupled windows, wooden frame, single glazing

#### KÖPPEN-GEIGER CLIMATE CLASS

Snow, fully humid, warm summer (Dfb)

#### DISTRIBUTION

Multifamily houses and apartment blocks built < 1945

} 7.6 %  
of the buildings in Sweden

Dwellings located within multifamily housing and built between 1931 and 1940

} 7.15 %  
of dwellings in Sweden

#### ORIGINAL USE

Residential

#### CONTEXT

Suburban

#### ENERGY PERFORMANCE RANGES

U-values [ $\text{W}/\text{m}^2\cdot\text{K}$ ]

Walls  0.58–2.23

Floor  0.30–0.40

Roof  0.36–0.50

Windows  2.22–3.20

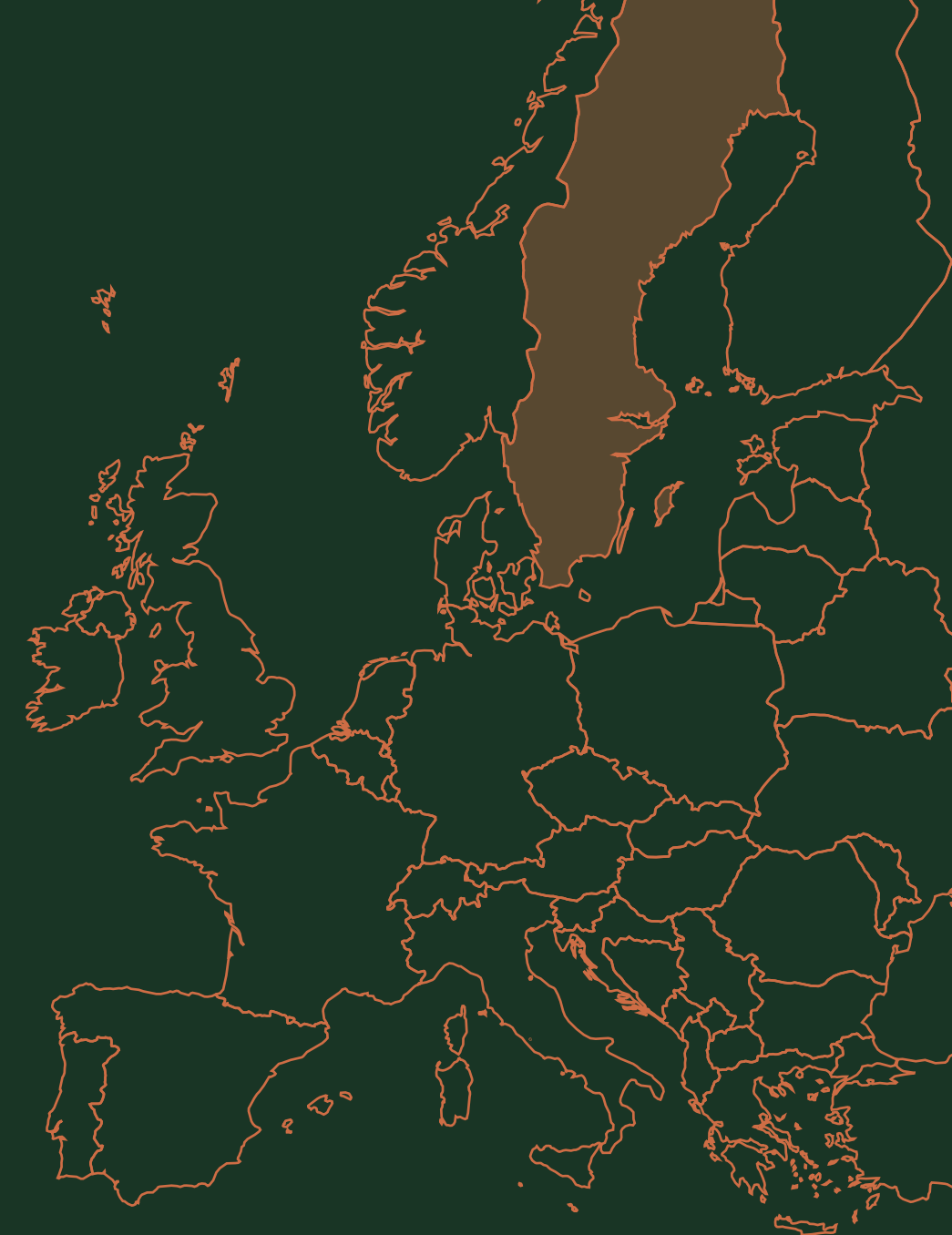
Energy demand [ $\text{kWh}/\text{m}^2$  year]



Heating demand:  
79–183



Cooling Demand:  
14–27



FuturHist



Learn more about this and other typologies at [futurhist.eu](https://futurhist.eu)



Co-funded by the European Union



UK Research and Innovation

Co-funded by the European Union and the UK Research and Innovation. Views and opinions expressed are however those of the author(s) only and do not necessarily reflect those of the European Union or European Climate, Infrastructure and Environment Executive Agency. Neither the European Union nor the granting authority can be held responsible for them.